

# Mapping in the Digital Liberal Arts: Models, Methods, Futures

David Joseph Wrisley - Assoc Prof of Digital Humanities - NYU Abu Dhabi @DJWrisley, *AMICAL Webinar*, 10 April 2018

جامعة نيويورك أبوظبي



NYU | ABU DHABI

# Overview of today's webinar

Models

Methods

Futures

---

# Abstract

This webinar takes a look at some of the ways that making digital maps can enrich research and pedagogy in the liberal arts context. We will look at examples of digital projects organized largely around spatial dimensions of society and culture, as well as others that use maps as one of the many ways that their subjects can be better understood. We will look at what makes a strong mapping project from a dual perspective: the data that underlies them as well as their visual expression. Finally, we will discuss some of the basic skills for collecting and organizing spatial data and the challenges we face as mapping projects grow. No technical expertise is required for this webinar.

# Models

---

# Why mapping?

- By mapping, I mean ***digital mapping***.
- ***Subject agnostic***: can be applied to many fields.
- Stresses the ***real-world situatedness and local complexity*** of any topic, “finding” the place on the map.
- ***Longitudinal***: mapping is “not a one-time thing” (Presner et al).
- ***Intentional, critical mapping***: mapping as opposed to being mapped.
- ***Data-centered***: excellent for learning data literacy/manipulation skills.



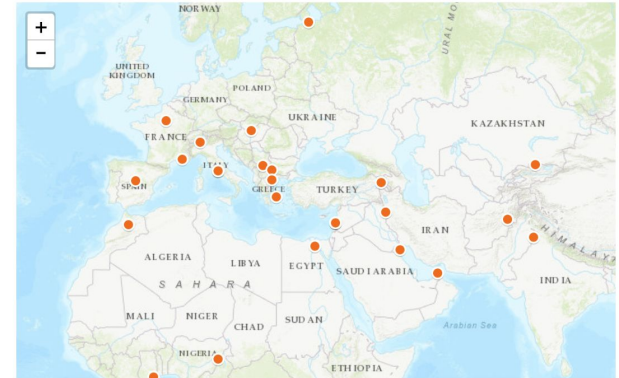
# Why mapping for the (international) liberal arts model?

- Close relationship to locality, place - makes for *experiential learning, research*
- Ability to work with archivists - *brings primary sources into the classroom*
- Strong visual element - complements other scholarship/pedagogy, *different learning styles*
- AMICAL consortium spread around Europe, Africa, MENASA - effective in *cultural ambassadorship*
- Critical pedagogy - opens a window for *critical discussion of privacy, device-centered student life*

AMICAL Consortium

MENU

Member institutions



# Going to the Show

gtts.oasis.unc.edu/map/?city=albemarle

DocSouth HOME

## Going to the Show

Search this Collection

Collection Home About the Collection Browse Advanced Search Special Features Help Acknowledgements

State Map : Mapped Cities

### Albemarle

Select overlay year:  
1922

Go to venue:  
Choose a venue...


Display:

- ☒ Venues
  - ☒ Active in 1922
  - ☒ Inactive in 1922
- ☐ Other Content
  - ☒ Postcards
- ☒ Overlay Map
  - Opacity:
- ☐ Current Street Names

Map Size:

- ☒ Small
- ☐ Large
- ☐ Fit to Screen

[VIEW CITY](#) [VIEW STATE](#)

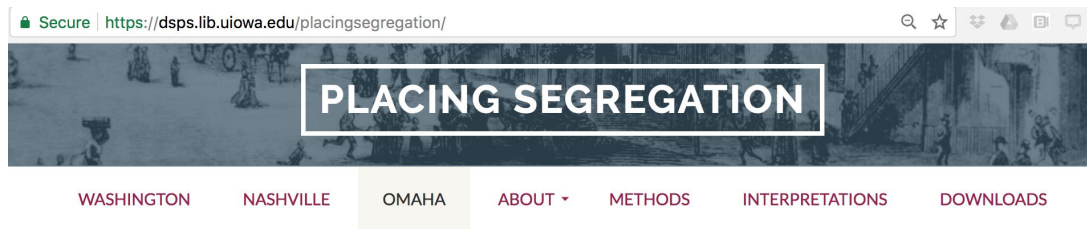


Map Satellite

Google Imagery ©2018, DigitalGlobe, USDA Farm Service Agency Terms of Use Report a map error

<http://gtts.oasis.unc.edu/>

# Placing Segregation



[dsps.lib.uiowa.edu/  
placingsegregation](https://dsps.lib.uiowa.edu/placingsegregation)

## HOME

---



Washington | 1860



Omaha | 1870



Downtown Nashville | 1860



# Street Art

Giovanni Vitali

<https://goo.gl/36bLyk>

Secure <https://uploads.knightlab.com/storymaps/63e59d585135787e1ee85f1aab344b68/la-pasquinata-dei-po...>

Back To Beginning



SON STANCA DAVVERO DI ESSER GUARDATA,  
STUDIATA, AMMIRATA E QUASI STUPRATA.  
DA OGGI DEFFENDI DI MAGNIFICENZA:  
D'ORO, GRANDEZZA, ARTE E CULTELLA:  
VOREI REGALARE QUALCOSA DI MIO  
A CHI NELLA VITA È IGNORATO DA DIO,  
A CHI NON COMPRENDE TANTA BELLEZZA.  
ECESSO DI SFARZO, VUOTA RICCHEZZA.  
VOREI PER UN GIORNO CHIEDERMICI DENTRO,  
SENTIRE DA SOLA IL SOFFIO DEL VENTO,  
SENTIRE IL SILENZIO CHE DENTRO LE TORRE  
MI PORTA A PENSARE ALL'UMANA SORTE,  
A QUELLE PAURE E FRAGILITÀ  
CHE GUIDANO IL MONDO E QUESTA CITTÀ.

- LA BASILICA DI SAN PIETRO -  
Imuni Laconico - Pdt

Imuni Laconico  
<https://www.facebook.com/ipoetidertrullo/photos/a.96814534321988.1073741830.137388052954394/1232557803437406/?type=3&theater>

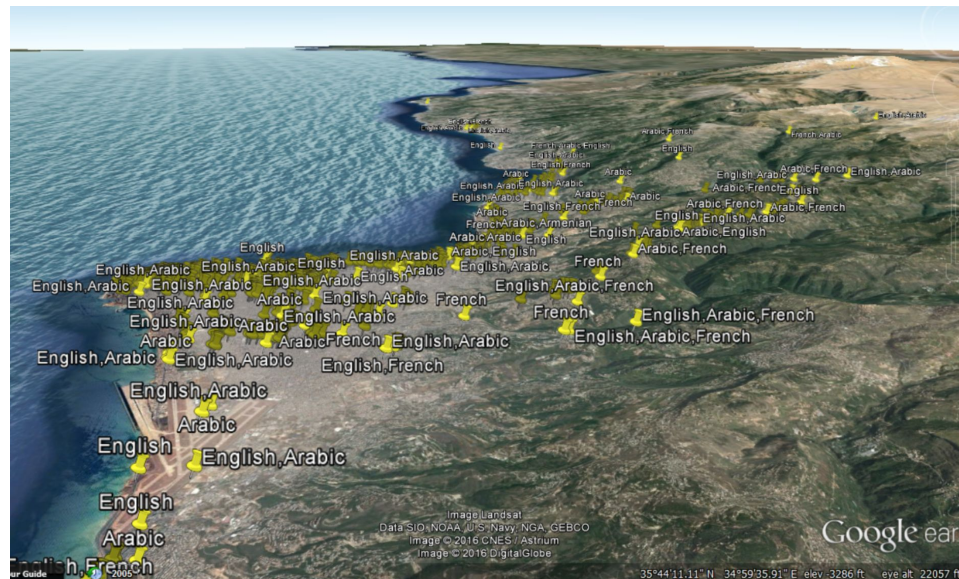
## THE BASILICA OF SAINT PETER

The basilica di San Pietro is the symbol of their criticism against the Church: it says that it is tired of being objectified by tourists, and it would like to remain closed, so that it would stay away from mass culture.

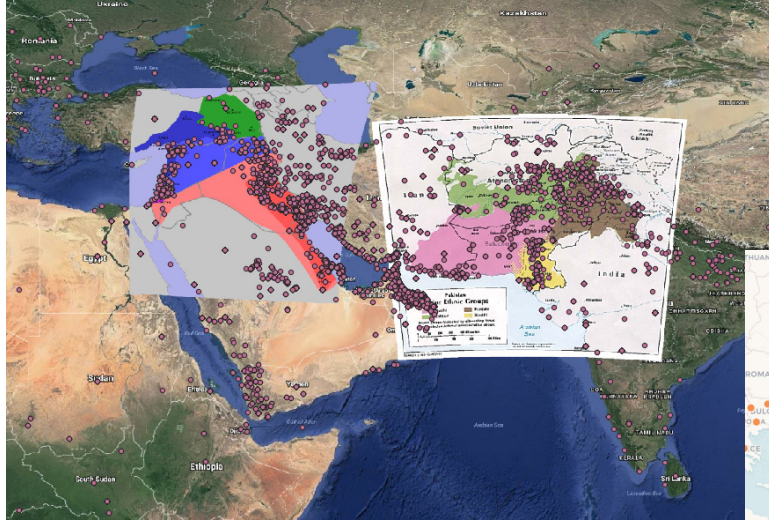
# Multilingualism in the Streets

Llbeirut.org

@DJWrisley

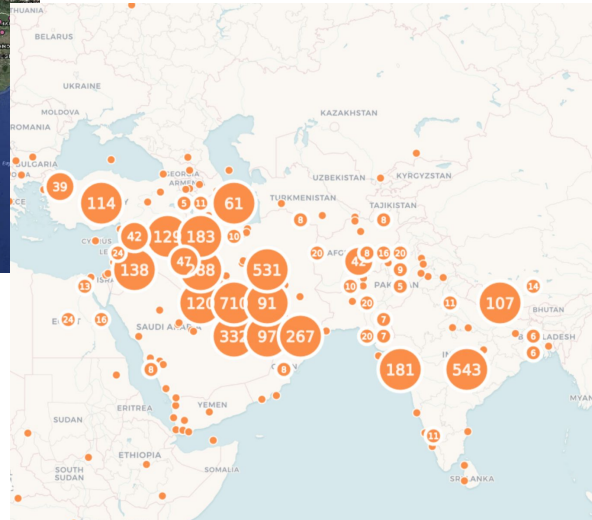


# Mapping Colonial Knowledge

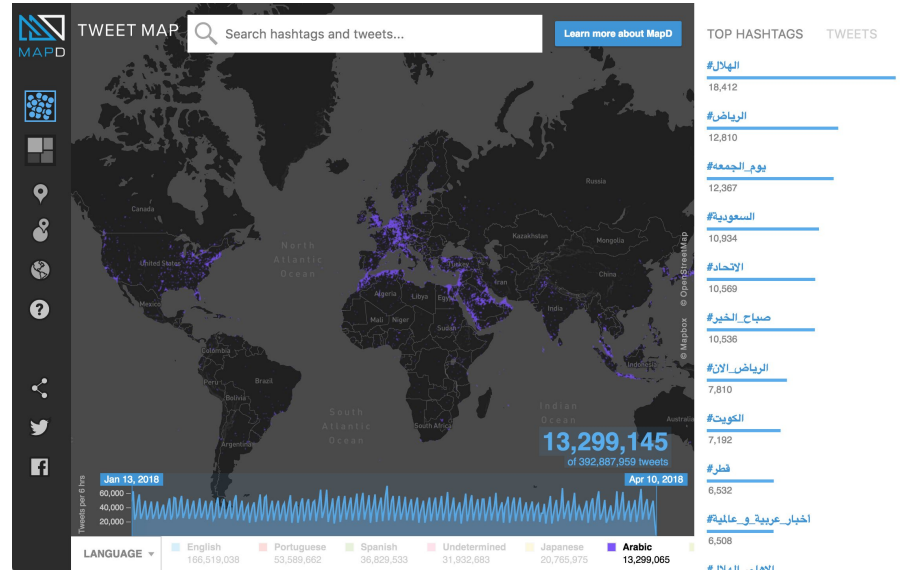
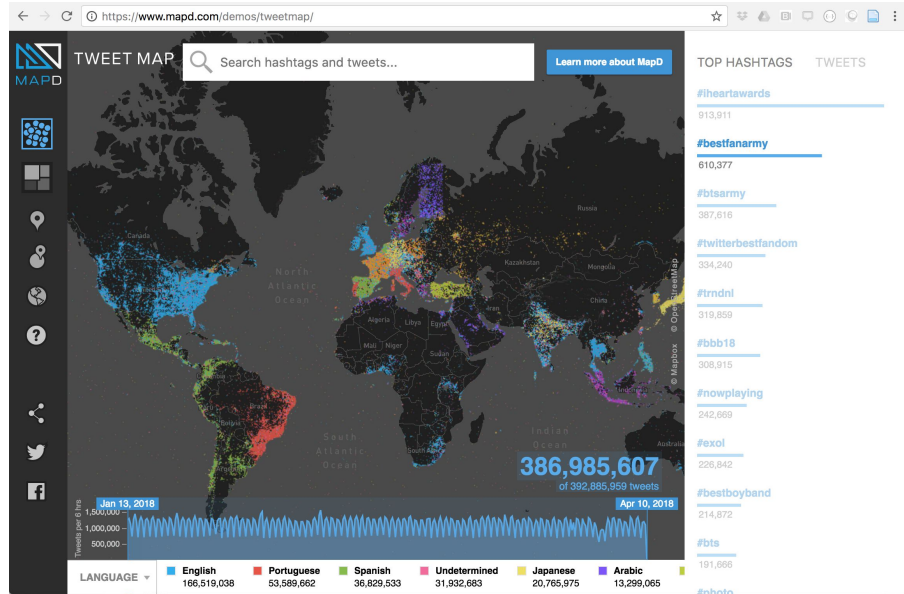


<https://github.com/MappingLorimer>

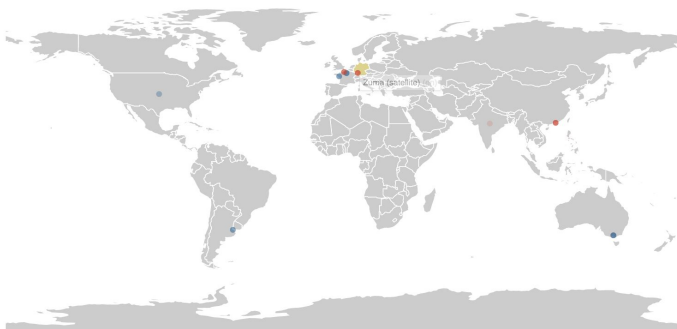
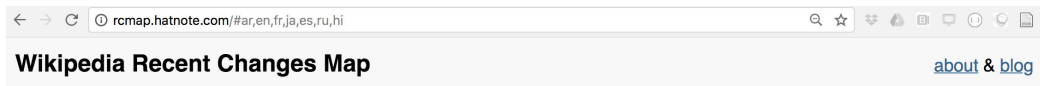
NYU Abu Dhabi



# Live, social geodata (mapd.com)



# Mapping Wikipedia edits, across languages



## Recent changes

- Someone in Karlsruhe (Baden-Württemberg Region, Germany) edited "[Zuma \(satellite\)](#)" <sup>(en)</sup>
- Someone in Sha Tin Wai (Hong Kong) edited "[Shenzhen Metro](#)" <sup>(en)</sup>
- Someone in Melbourne (Victoria, Australia) edited "[1969 Melbourne Transportation Plan](#)" <sup>(en)</sup>
- Someone in Hougueville (Seine-Maritime, France) edited "[Œuvres de Cidron](#)" <sup>(fr)</sup>
- Someone in Paris (Île-de-France, France) edited "[Alexandropolis-Demonstration](#)" <sup>(fr)</sup>
- Someone in Nantes (Pays de la Loire, France) edited "[Les Bracquets rouges \(série télévisée française\)](#)" <sup>(fr)</sup>
- Someone in Buenos Aires (Buenos Aires F.D., Argentina) edited "[José Miguel del Pópulo](#)" <sup>(es)</sup>
- Someone in United States edited "[Serpent seed](#)" <sup>(en)</sup>
- Someone in Deer Park (Victoria, Australia) edited "[Self-Help \(book\)](#)" <sup>(en)</sup>
- Someone in India edited "[Java Bachchan](#)" <sup>(en)</sup>
- Someone in Buenos Aires (Buenos Aires F.D., Argentina) edited "[Provincia de Corrientes](#)" <sup>(es)</sup>
- Someone in Philippines edited "[Tosonin II](#)" <sup>(en)</sup>
- Someone in United Kingdom edited "[Bhvy McClanaphan](#)" <sup>(en)</sup>
- Someone in Dubai (Dubai, United Arab Emirates) edited "[India at the 2018 Commonwealth Games](#)" <sup>(en)</sup>
- Someone in Upper Swan (Western Australia, Australia) edited "[Cable tie](#)" <sup>(en)</sup>

[Rcmap.hatnote.com](https://rcmap.hatnote.com)

Real-time wikipedia edits by location of user or IP address, here shown:

- Arabic
- English
- French
- Japanese
- Spanish
- Russian
- Hindi





# Methods

---

# How do we make maps? Build maps?

- text



# How do we make maps? Build maps?

- Text
- Other (historical) maps

# How do we make maps? Build maps?

- Text
- Other (historical) maps
- From other's data (e-government, etc)

# How do we make maps? Build maps?

- Text
- Other (historical) maps
- From other's data (e-government, etc)
- devices

# Mapping in a few skills

- Collaboration
- Data modeling
- Data manipulation
- Layering
- Visual semantics
- Image manipulation
- Georeferencing
- Basic data structuring

# Futures

(including the challenges)

---

# Geospatial work given limited internet/data

2018.foss4g.org/programme.html



## Urban

- Pollution in cities
- Greening Transports
- Urban Planning
- Informal Settlements detection

## Coastal, Marine and the Environment

- Sensitivity Mapping
- Sea level rise
- Illegal Fishing
- Pollution
- Marine Spatial Planning

## Widening Access and Humanitarian Mapping

Geospatial applications in low speed internet countries, how to cope in the age of Cloud Based Geospatial technologies, the role of the crowd.

- The role of the crowd
- Widening Access: Community
- Widening Access: Technology
- Humanitarian Mapping
- Sustainable Development
- Geospatial applications in Low speed internet countries
- How to cope at the age of Cloud Based Geospatial technologies.
- The role of the crowd
- Widening Access: Community
- Widening Access: Technology
- Humanitarian Mapping
- Sustainable Development

## Drones:

- Aerial
- Underwater
- OpenSource Workflow,
- Fleet management software

<http://2018.foss4g.org/>

Open Source Geospatial

Dar es Salaam

# Maps (and different ways of visualizing map data)



Medieval.place

@DJWrisley

# Future issues

- Changing mapping platforms  
(will Carto / MapBox / Boundless / Voyant / Omeka exist?)
- Sharing our Data : spatial data repositories, formats
- open data portals
- geolocation isnt just for maps anymore (drones, 3d)

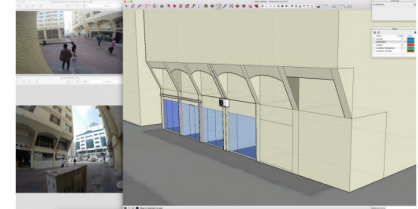


Figure 2

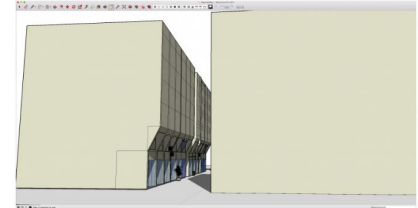
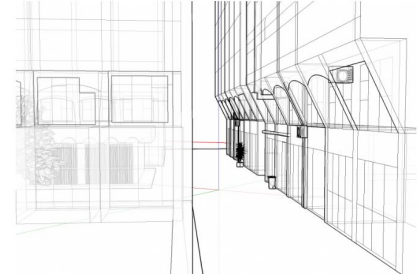


Figure 3



<http://beetroot.hosting.nyu.edu/>



# Want to know more?

- Association of Digital Humanities Organizations (ADHO) has a *GeoHumanities SIG*
- Open Street Maps* (OSM) has mapping activities all around the world
- Mapping courses at digital humanities training events

DHIB / DHSI / ESUDH

- check out the teaching tab of my own website [djwrisley.com](http://djwrisley.com)
- reach out to colleagues in your own institution: *media, geography, data science*

# ESU DH - Humanities Data and Mapping Environments



**"Culture & Technology" - The European Summer University in Digital Humanities**

The Name Background Mission Audience Workshops Lectures Projects Round Tables Working Languages Impressum Kontakt

## 2018

- Important dates
- Application
- Scholarships
- Fees
- Workshops
  - XML-TEI document encoding, structuring, rendering and transformation
  - Hands on Humanities Data Workshop - Creation, Discovery and Analysis
  - Collocations from a multilingual perspective: theory, tools, and applications
  - Reflected Text Analysis in the Digital Humanities
  - Humanities Data and Mapping Environments
  - Building and analysing multimodal corpora
  - Stylometry

## Humanities Data and Mapping Environments

This spatial humanities workshop will introduce participants to different ways of thinking about humanities data, their curation within projects and their use in digital mapping environments. The workshop will not be a traditional course in Geographic Information Systems (GIS), although we will use some of the functionality of open source GIS along the way. The workshop is designed for the total beginner who would like to explore how a spatial dimension can enrich humanities and interdisciplinary research projects and who would like to learn some basic skills for collecting and organizing data in order to be able to integrate such methods into their research workflows.

The workshop lasts a total of 36 hours, two weeks of 18 contact hours each.

The central goals of the workshop are fourfold:

- to learn where we can obtain spatial data relevant to our research interests, or capture data from analog sources through digitization,
- to explore how data spatial data can be modeled for our projects,
- to practice different ways that we can tell a story by visualizing spatial data, and
- to learn ways that we can disseminate and share that data.

In the **first part of the course** we conduct a critical review of a range of projects in the spatial humanities: their scope and the rhetorical strategies they employ for spatial storytelling and argument. We will begin by reflecting on how location-based research might be incorporated into research projects in different disciplines (cinema, art history, anthropology, history, literature, etc) as well as the challenges of such a spatial dimension in research. We will begin to learn about the creation of data in relevant formats for spatial humanities projects (using gazetteers, mobile data collection, off the shelf software) and learn some basic coding skills in order to perform repetitive tasks for building a spatial dataset (with Python, OpenRefine, Edinburgh Geoparser and TopoText, for example). Students will be introduced to

## Leipzig

- Contact
- Host
- Venue
- Accommodation
- City Map
- Arrival
- Events
- Weather

## ESU in the Media

 CLARIN-D at ESU 2015 (YouTube)  
 CLARIN-D ESU 2015 (YouTube)  
Mephisto 97.6 10.07.13  
Campus Online 10.08.2012  
Mephisto 97.6 26.07.2010  
InfoLeipzig 26.07.2010  
In India 03.09.2010

## Reviews

INFOtheka: Review of ESU DH 2009  
INFOtheka: Review of ESU DH 2012  
Infodico.ch: Review of ESU DH 2013

## Publications

Multimodal Analysis of "well"

## Users

**17-27 July 2018**  
**Leipzig, Germany**

“designed for the total beginner who would like to explore how a spatial dimension can enrich humanities and interdisciplinary research projects and who would like to learn some basic skills for collecting and organizing data in order to be able to integrate such methods into their research workflows.”

[http://www.culingtec.uni-leipzig.de/ESU\\_C\\_T/no\\_de/930](http://www.culingtec.uni-leipzig.de/ESU_C_T/no_de/930)