

**ACT** | a division of  
Anatolia College



# Empowering Educators: The Anatolia College Libraries AI Guide for Teaching and Learning

*Eleni Filippidou, User Services & Project Librarian, Bissell Library*

*Dr. Evi Tramantza, Director of Anatolia College Libraries & Archives*

*May 20, 2025, AMICAL*





# Agenda

- The AI Committee and its objectives
- The reasoning behind selecting the categories and content
- The difficulties encountered
- LibGuide navigation
- The feedback
- Our reflection on the process of creating this AI libguide
- Our next steps



# AI Committee

5 librarians from Bissell & Eleftheriades Libraries

**Dr. Evi Tramantza**

Director  
of Anatolia Libraries &  
Archives

**Stella Asderi**

Supervisor  
of Academic Liaison  
Librarians  
Bissell Library

**Nikos Finos**

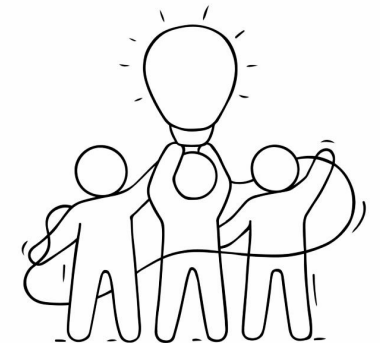
IB Librarian  
Eleftheriades Library

**Apostolos Chouliarakis**

Teacher Librarian  
& Systems Coordinator  
Eleftheriades Library

**Eleni Filippidou**

User Services & Project  
Librarian  
Bissell Library



## Objectives

- Support Anatolia & ACT faculty, librarians & staff use AI in the educational process
- Encourage faculty to explore the potential of AI in their teaching — understanding its possibilities, aligning with our policies, and remaining mindful of ethical considerations.
- Provide information and useful content
- Ensure librarians, faculty, and staff can offer adequate advice



## WHY: The reasoning for this initiative

- Respond to a growing need
- Create a trusted resource
- Promote ethical and informed use
- Empower faculty, librarians and staff
- Build a living & evolving tool
- Bridge the gap between curiosity and confidence





# Challenges

- Aligning across teams & schedules
- Individual Concerns
- Keeping up with rapidly changing tools & information
- Content curation
- Time and capacity





# LibGuide Content

1

**Home**

2

**Gen AI tools**

3

**Prompt Design**

4

**AI in Education**

5

**How to cite**

6

**AI & Ethics**

7

**AI in everyday life**

8

**Library resources**

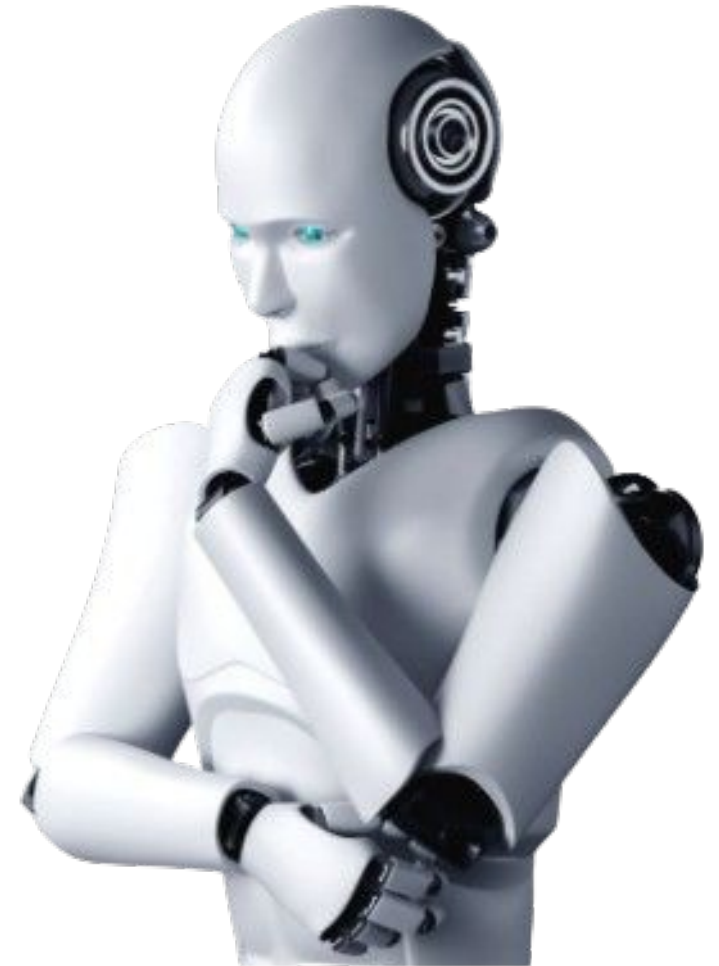


## Feedback

- Frequency of AI use: 60% → frequently & very frequently, 20% → rarely
- What was your first impression of the guide?
  - *“It is a very precise and on point guide to assist professionals while navigating the world of AI.”*
- LibGuide accuracy & relevance: 80%
- LibGuide Practical Impact: 100%
  - “It can serve as a reference point for all tutors, especially when issues arise [...] - particularly the GenAI Tools tab; it can serve as a prompt/tool for in-class or take-home activities.”
- Identified Gaps
  - Finally, we asked respondents to answer the question: 'Are there any important topics or resources that you think are missing?'. The majority of participants agreed that all relevant topics and resources were sufficiently covered.

## Our reflection & next steps

- Collaborative effort
- Flexibility & openness
- Support decision-making and building critical capacity
- Content selection & evaluation
- Professional development
- Lack of critical voices in our context





# References

Anatolia College (2024) *The Policies of Anatolia College* Available at: [https://anatolia.edu.gr/images/highschool/About/Policies%202024-2025\\_EN.pdf](https://anatolia.edu.gr/images/highschool/About/Policies%202024-2025_EN.pdf) (Accessed: 15 May 2025).

*Artificial Intelligence (AI) and copyright* (2025) Copyright Alliance. Available at: <https://copyrightalliance.org/education/artificial-intelligence-copyright/> (Accessed: 15 May 2025).

*Artificial Intelligence (AI) in learning, teaching, and Assessment* (2025) International Baccalaureate. Available at: <https://www.ibo.org/programmes/artificial-intelligence-ai-in-learning-teaching-and-assessment/> (Accessed: 15 May 2025).

Birss, D. (n.d.) *The prompt collection: From the LinkedIn Learning course “How to research and write using Generative AI tools”*. Available at: [https://davebirss.com/documents/the\\_prompt\\_guide.pdf](https://davebirss.com/documents/the_prompt_guide.pdf) (Accessed: 15 May 2025).

European Union (2022) *Ethical guidelines on the use of Artificial Intelligence (AI) and data in teaching and learning for educators*. Available at: <https://op.europa.eu/en/publication-detail/-/publication/d81a0d54-5348-11ed-92ed-01aa75ed71a1/language-en> (Accessed: 15 May 2025).

*Generative AI product tracker* (2024) Ithaka S+R. Available at: <https://sr.ithaka.org/our-work/generative-ai-product-tracker/> (Accessed: 15 May 2025).

*A history of AI*. (n.d.) University of Oxford. Available at: <https://oxford.shorthandstories.com/ai-a-history/index.html> (Accessed: 15 May 2025).

The Open University (n.d.) *Generative AI for students*. Available at: <https://about.open.ac.uk/policies-and-reports/policies-and-statements/gen-ai/generative-ai-students?nocache=6523cf4c02f20> (Accessed: 15 May 2025).

PricewaterhouseCoopers (n.d.) *How boards can effectively oversee AI to drive value and responsible use*. Available at: <https://www.pwc.com/us/en/services/governance-insights-center/library/ai-governance-and-boards.html> (Accessed: 15 May 2025).



# Thank you!

**Our LibGuide:**  
**Artificial Intelligence**  
**in Education**

**Our AI Committee:**

Dr. Evi Tramantza, [evi@act.edu](mailto:evi@act.edu)

Stella Asderi, [sasderi@act.edu](mailto:sasderi@act.edu)

Nikos Finos, [nfinos@anatolia.edu.gr](mailto:nfinos@anatolia.edu.gr)

Apostolos Chouliarakis, [chouliar@anatolia.edu.gr](mailto:chouliar@anatolia.edu.gr)

Eleni Filippidou, [filippidou@act.edu](mailto:filippidou@act.edu)